

## Look for Tadpoles and more in



Thank you to Acorn Adventure sponsors:



Tadpoles hatch from eggs. They can, depending on species, take several weeks to several years to transform.

**Tadpoles:** Bullfrog and green frog tadpoles - the bullfrog takes two years to reach metamorphosis and the green also overwinters and will be laying its eggs in June/August - so you can see both in various stages of metamorphosis.



### **Frogs:**

**Pickerel frog:** live in stream corridors, wet meadows, and open, weedy wetland edges.



**Northern leopard frog:** live in seasonal wet meadows and forests located on floodplain of a river or large stream. Jump in zig-zags in tall grass!



**Gray treefrog:** lives in shrub swamplands, has suction cup feet, and yellow marks on back of legs.



**Spring peeper:** has suction cup toes!



**Bullfrog:**



**Toads:** The American toad would have developed into small black toadlets by June and you probably will see them along the edges of wetlands.



**Salamanders, Spotted:**



**Salamanders, Northern Redback:**



**Fairy shrimp:**



**Red spotted newts:**



**Predaceous diving beetles:**



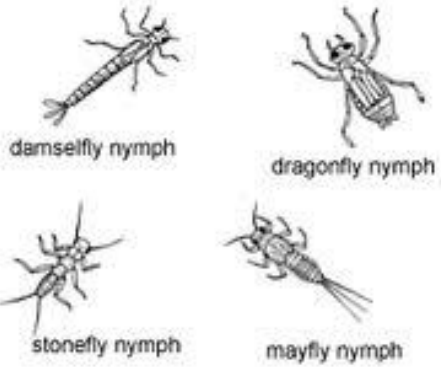
**Dobsonfly larvae:**



**Caddisfly larvae:**



**Dragonfly nymphs, damselfly nymphs:**



**Whirligig beetles:**



**Fingernail clams:**



*Please put your creatures back in the water.*

Keep up to date on  
[www.thelastgreenvalley.org](http://www.thelastgreenvalley.org)  
and on our Facebook page!